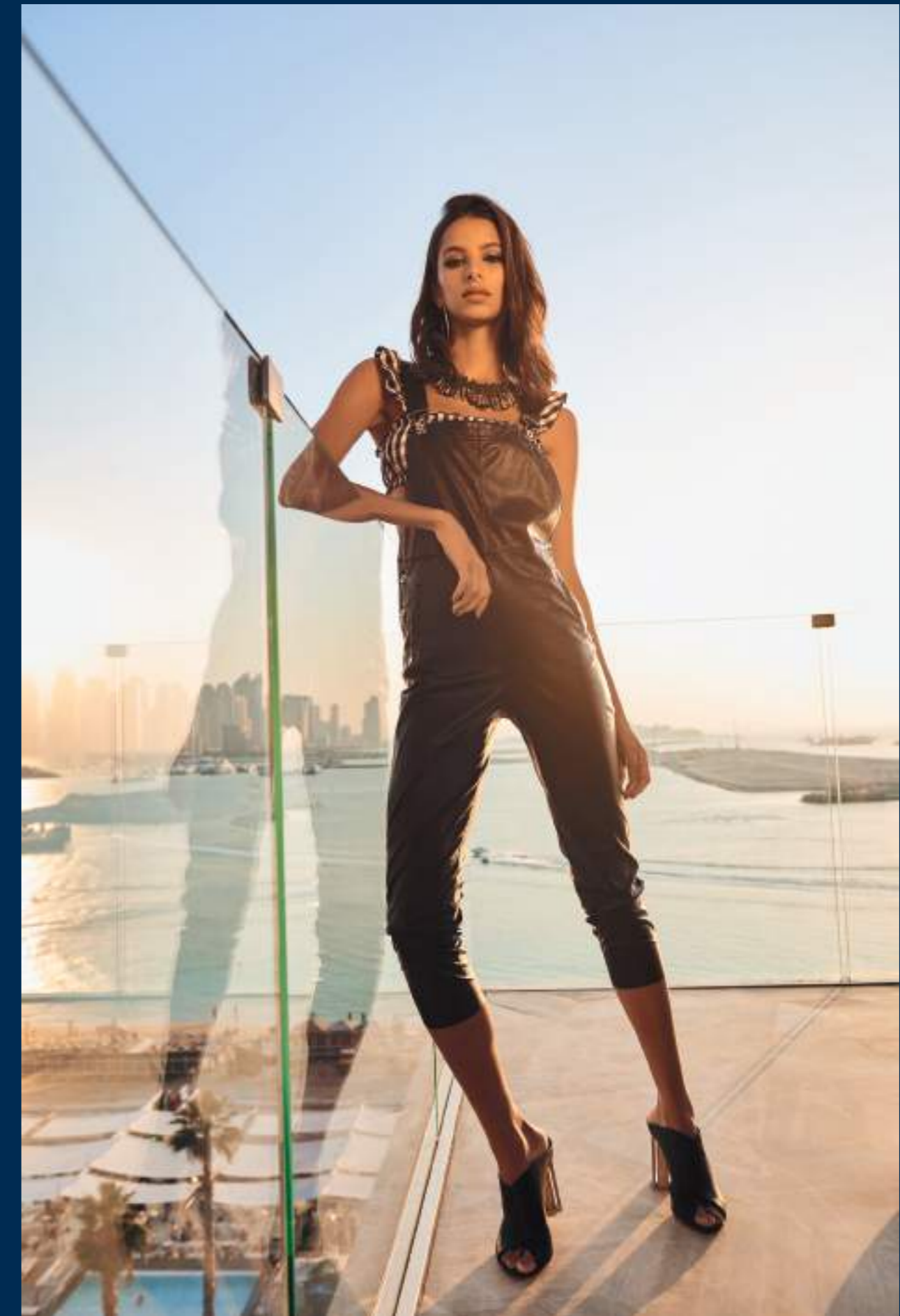


F I V E

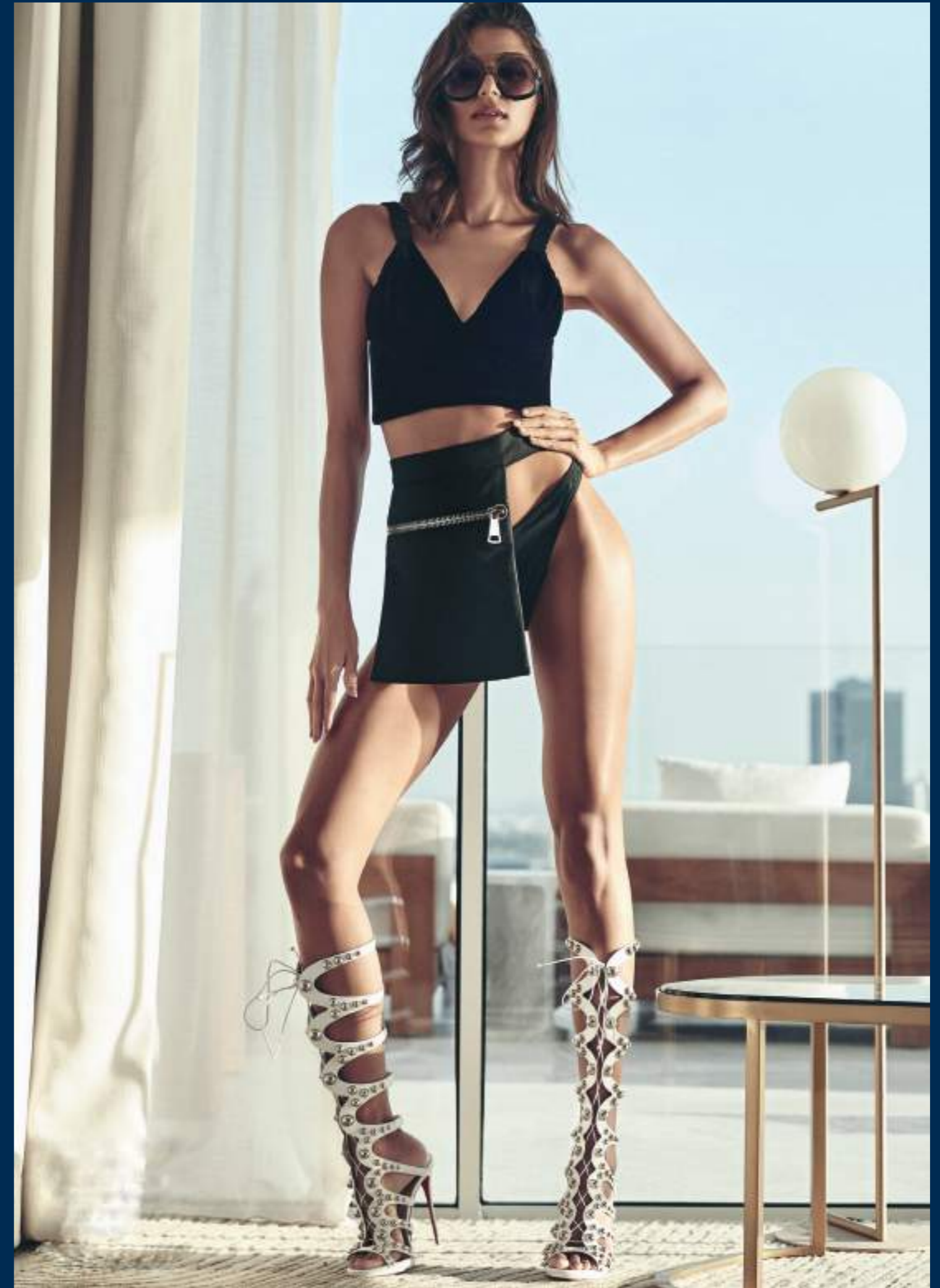
L U X E

“ THIS IS UNSHAMEDLY  
ABOUT LUXURY ”

– DAILY MAIL



ABOUT FIVE





**THE WORLD OF FIVE.**

FIVE Hotels & Resorts are more than exquisite dining meets exceptional entertainment and lavish comfort.

That's because our hotels dare to be different.



**FIVE HOTELS & RESORTS.**

Ranked among Dubai's top hotels, FIVE is quickly gaining a reputation as the go to lifestyle and entertainment destination for some of the biggest artists, celebrities and insta-famous stars looking for out-of-this-world experiences.



Performance lineup for LUVYA Festival at FIVE Palm Jumeriah.

*Top to bottom:* Craig David, Mads, Disciples.





LUVYA Festival at FIVE Palm Jumeriah.



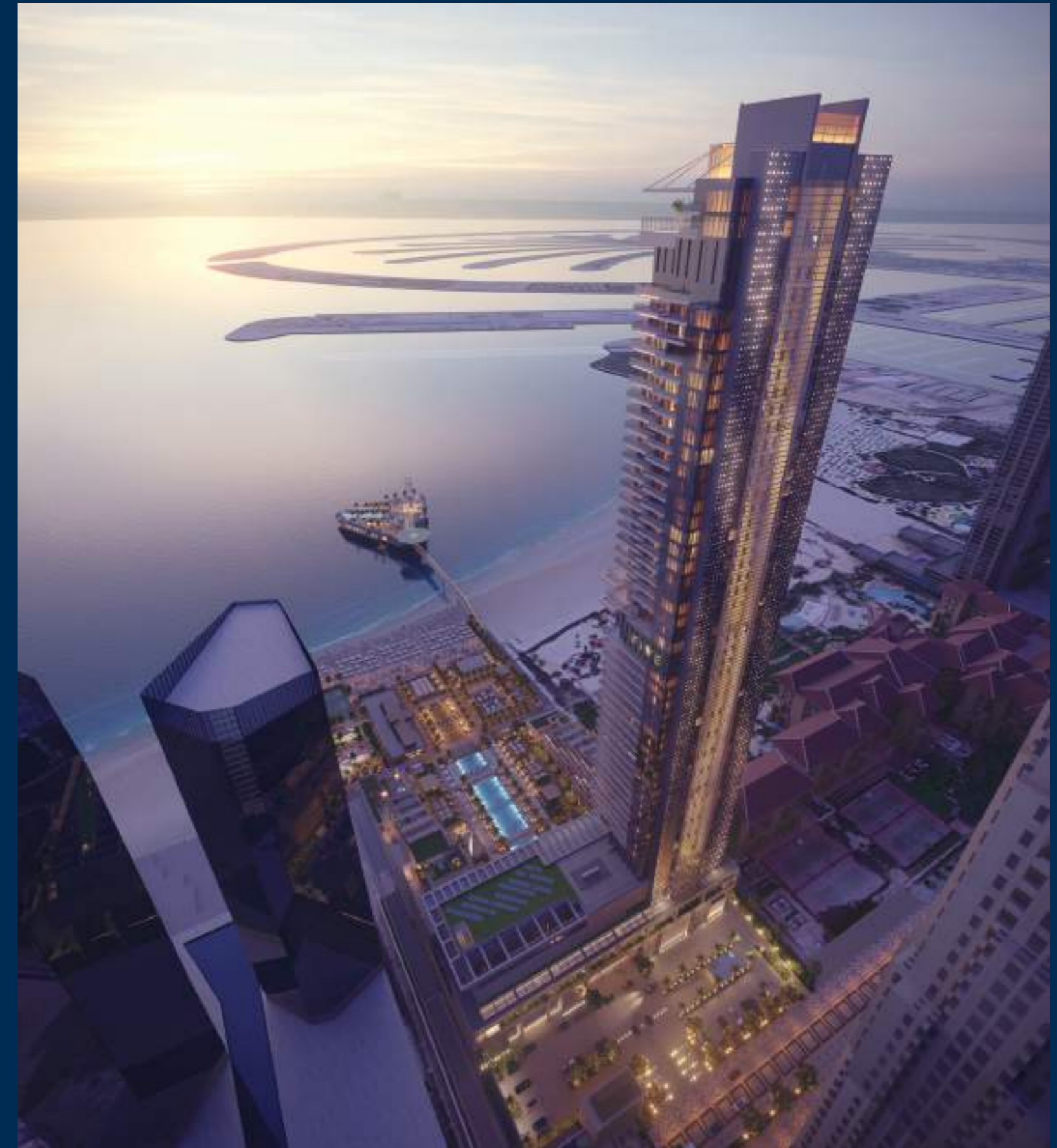
Performance lineup for LUVYA Festival at FIVE Palm Jumeriah.

*Top to bottom:* Klingande, Eli & Fur, Lost Frequencies.





# FIVE LUNE





**WATERFRONT LIVING WITH  
THE WORLD AT YOUR FEET.**

We are proud to announce FIVE LUXE. A prime beach property in the heart of JBR with sweeping sunset vistas of the Dubai Eye and Palm Jumeirah.

FIVE LUXE boasts 231 sensational suites and 100 opulent serviced apartments. There are 7 extraordinary restaurants and nightclubs. The ReFIVE Spa, private beach access, iconic social pool and 6 other stunning places to eat and drink complete the picture. FIVE LUXE is slated to open in the first half of 2023. It will embody the authentic and unique vibe that global Millennials love.









# LOCATION



## EXPLORE THE LOCATION.

FIVE LUXE takes pride of place in the vibrant waterfront community of Jumeirah Beach Residence, also known as JBR.

JBR is 1.7 kilometers of waterfront on the coast of the Persian Gulf in Dubai. Beachy, bustling and diverse, it's the perfect place for couples, singles and young families. Beachfront cafes, high-end shops, cinema and kids activities are all on your doorstep, it's an entertainment hub beyond compare.



# AMENITIES





**INDOOR POOL & GYM.**  
Stay in shape, in splendour.

When working out is this luxurious, you'll never want the session to end. Dive into crystal clear water, surrounded by Italian marble, chandeliers, fires and water fountains, bringing drama and luxury to your swim. Get energized in the gym with endless views over Dubai and the surrounding ocean. All the latest equipment, all in one place.









**OUTDOOR GYM.**  
Get pumped in paradise.

Workout in wonder in our outdoor gym of dreams. Spread out over 7,000 sq ft, this super luxurious space could be the best gym session you ever have. Views for miles. Lungfuls of fresh air, all the equipment you could ask for. Pumped already?



**ReFIVE SPA.**  
Relax, refresh and unwind.

Escape the outside world and retreat into sensational surroundings for a bit of me time. Enjoy sumptuous massages and spa treatments designed to let you unwind, reinvigorate your senses and rebalance your energy. So you can go back out there looking and feeling your very best.









**PRIVATE BEACH.**  
A glorious beach just for you.

Soak up the sun in style on your very own private beach. Look out over miles of glistening ocean. Feel the sand between your toes. Take a dip, lounge, laugh and kick-back in luxury, just for you.





**PADDLE COURT.**  
Play to win, play for fun.

Get active, embrace your competitive side, or just have a bit of fun on our pristine paddle court. Never played before? Take a lesson or we'll find the perfect partner for your first game.



**MAIN POOL.**  
The place to splash out.

The beating heart of the hotel, poolside is where you want to be and be seen. With uninterrupted views of the stunning ocean, this palm-lined pool is the perfect place to party, get some rays or to just lie back and take in the wonder of it all.







**KIDS AREA.**  
Where kids get their kicks.

Let the little ones let off steam in perfect safety and make memories to last a lifetime. With a whole host of activities and entertainment the only thing you'll need to worry about is prizing them out of there.





KIDS POOL.



# RESIDENCE







#### KEYS TO THE KINGDOM.

With panoramic views over the ocean, a private beach, residential lobby concierge and a glass elevator right to your front door, why holiday at the most exclusive address in Dubai when you can live here instead. Did we mention watching sun set into ocean every day of the year?

## ROOM WITH A VIEW.

Spacious, elegant and with the biggest sea view of anywhere in Dubai, the worst thing about these apartments is leaving them. Starting from the 11th to the 30th floor, your slice of paradise is here for the taking. Super high ceilings (3.7m), 90m of seafront views, high-end kitchens and bathrooms with all the fixtures and fittings you desire. A pretty special place to call home.





LEVEL 12 STUDIO RESIDENCE.







1 BEDROOM RESIDENCE.









LEVEL 22 STUDIO RESIDENCE.





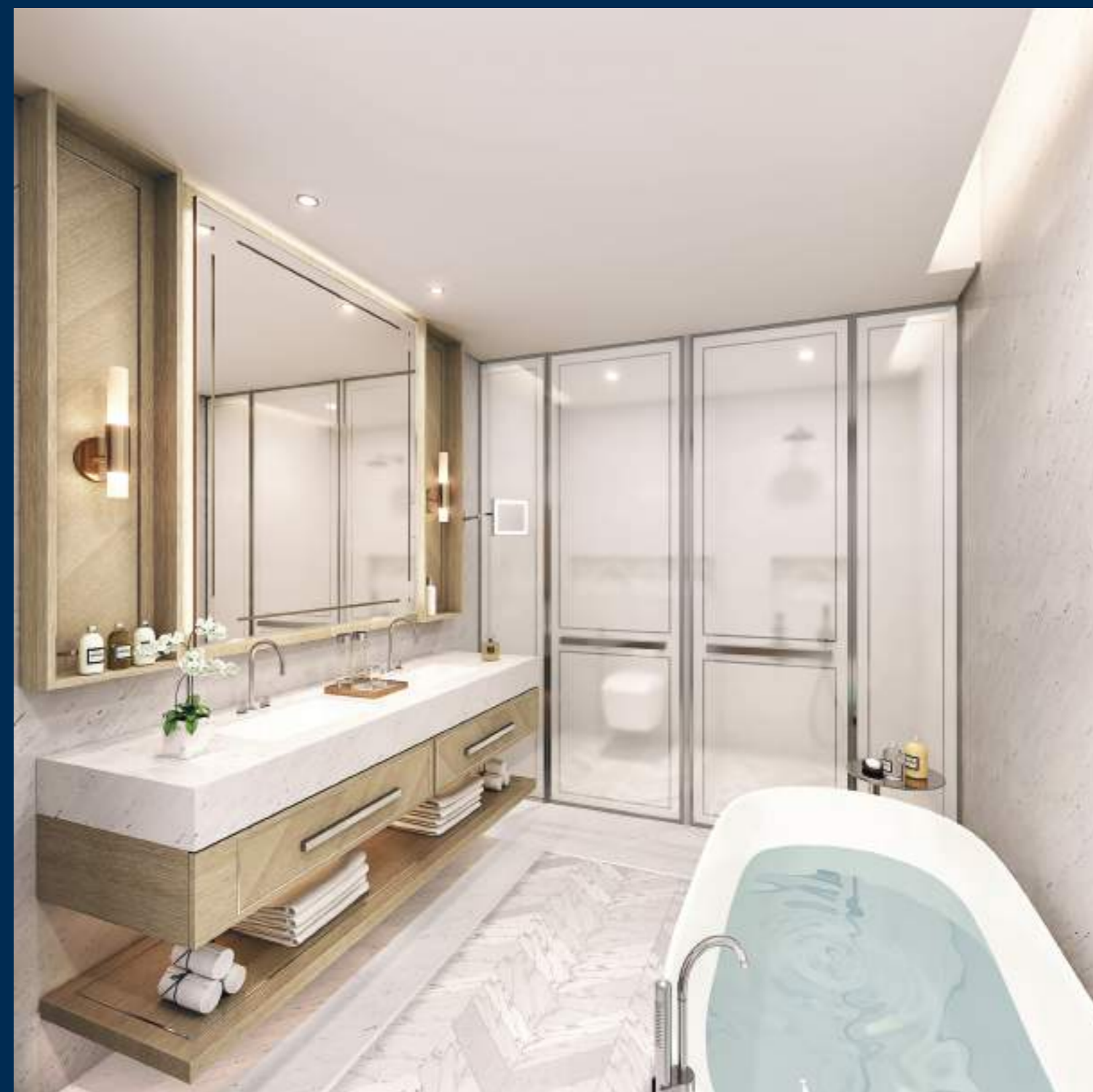


BALCONY STUDIO RESIDENCE.



3 BEDROOM RESIDENCE.











4 BEDROOM RESIDENCE.









# FLOOR PLANS

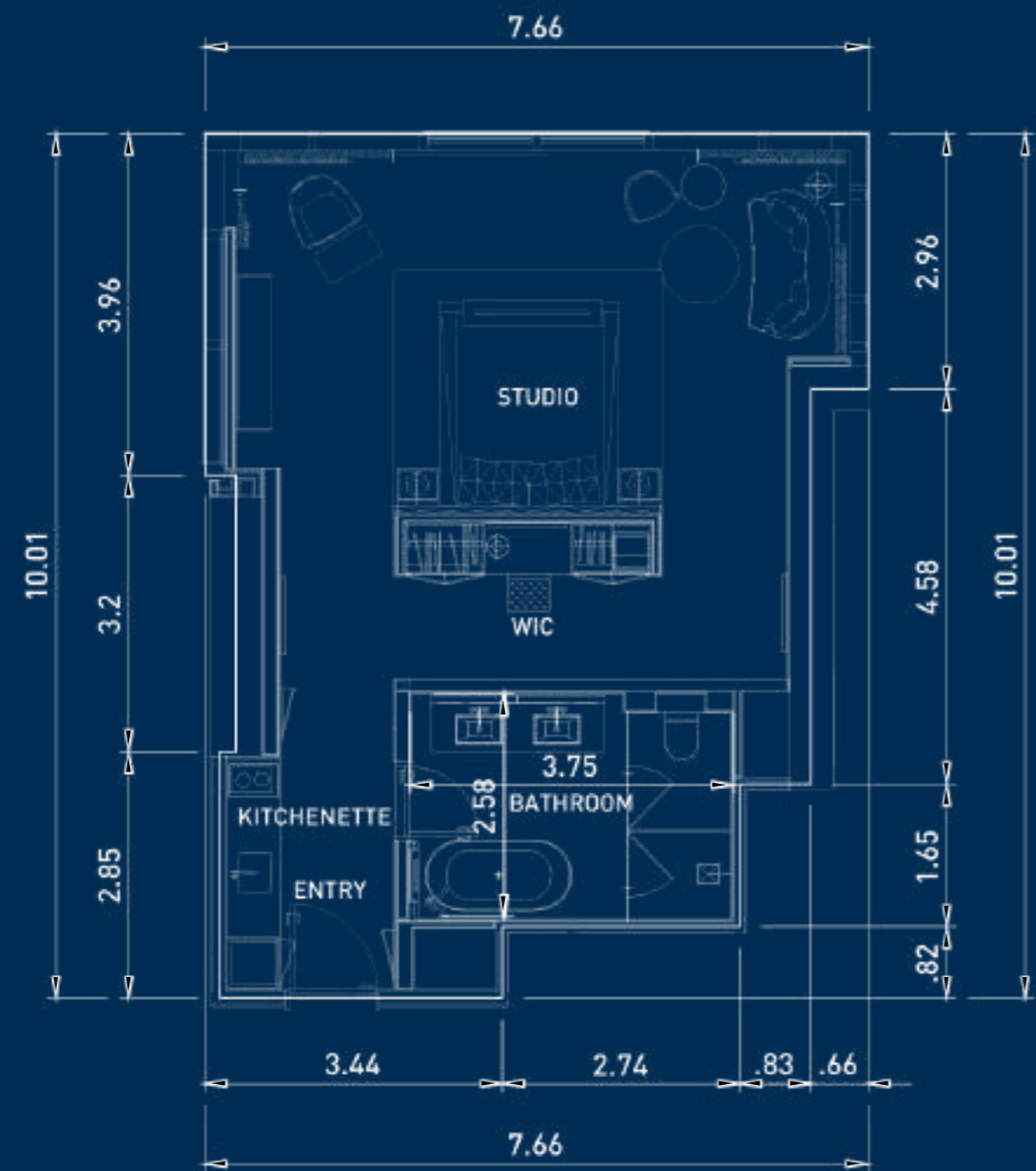


## STUDIO UNIT 1201

INDOOR	711.82 SQFT.	66.13 SQM.
TOTAL AREA	711.82 SQFT.	66.13 SQM.



LEVEL 12 KEY PLAN



Note: This is a conceptual plan and the dimensions are tentative subject to further design development. The Buyer understands and accepts the reasonable potential variance regarding the dimensions.

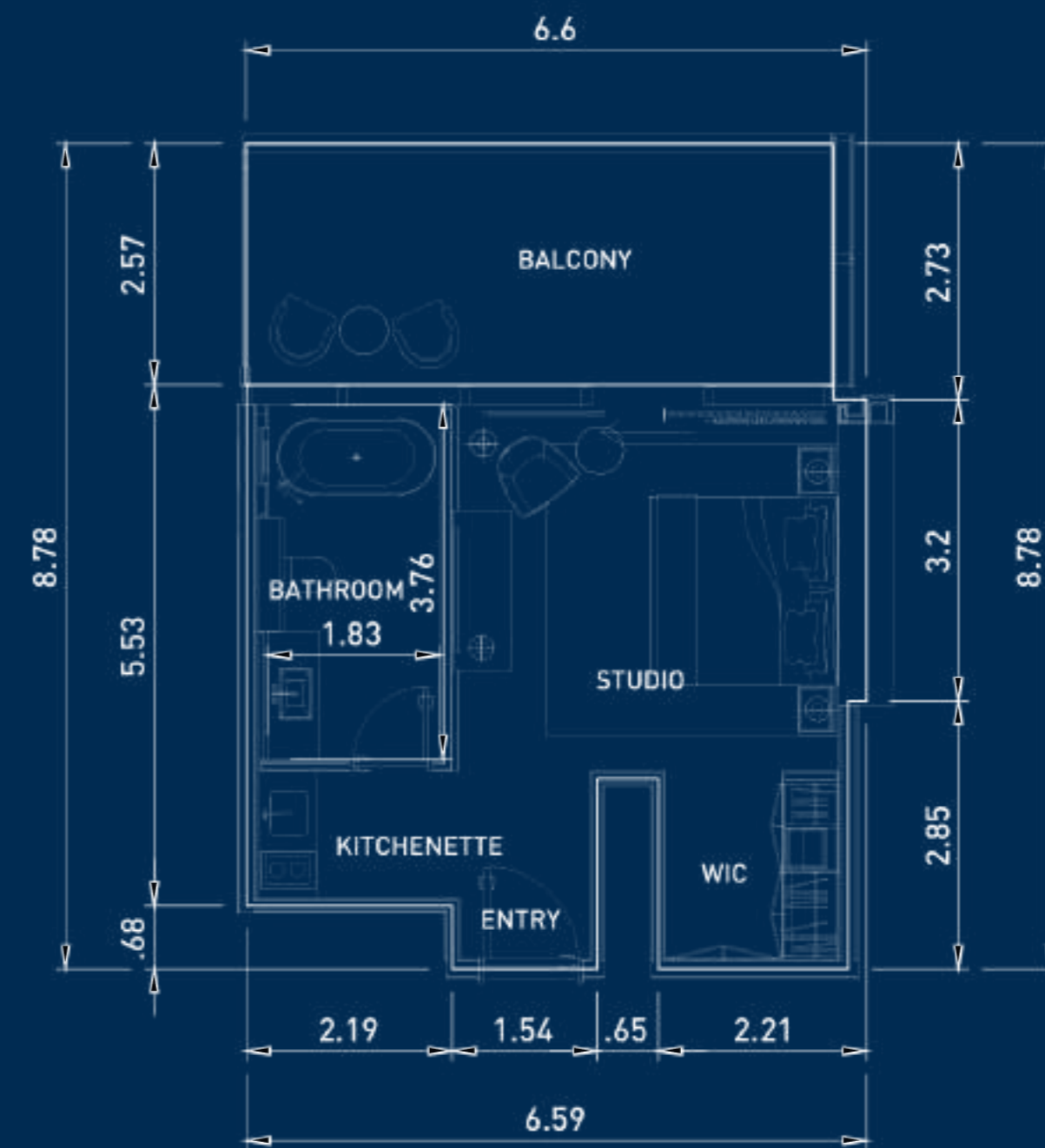
All dimensions are in meters.

## STUDIO UNIT 1202

INDOOR	403.54 SQFT.	37.49 SQM.
OUTDOOR	172.65 SQFT.	16.04 SQM.
TOTAL AREA	576.20 SQFT.	53.53 SQM.



LEVEL 12 KEY PLAN

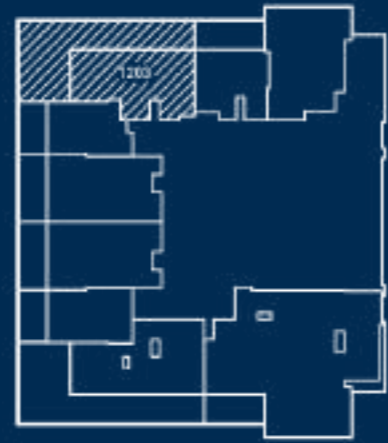


Note: This is a conceptual plan and the dimensions are tentative subject to further design development. The Buyer understands and accepts the reasonable potential variance regarding the dimensions.

All dimensions are in meters.

### 1 BEDROOM UNIT 1203

INDOOR	630.88 SQFT.	58.61 SQM.
OUTDOOR	653.27 SQFT.	60.69 SQM.
TOTAL AREA	1,284.15 SQFT.	119.30 SQM.



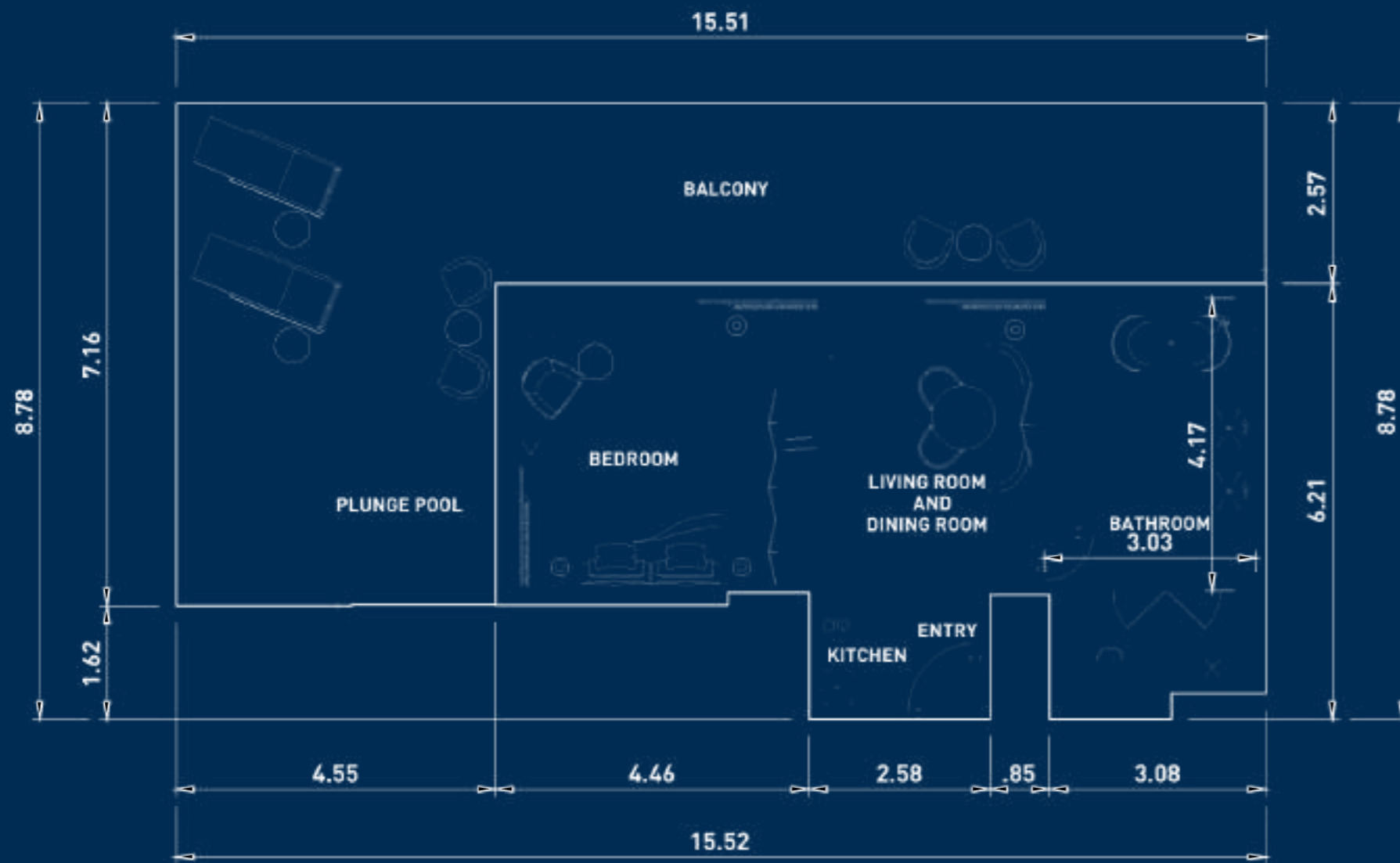
LEVEL 12 KEY PLAN

### STUDIO UNIT 1204

INDOOR	364.04 SQFT.	33.82 SQM.
OUTDOOR	124.43 SQFT.	11.56 SQM.
TOTAL AREA	488.47 SQFT.	45.38 SQM.

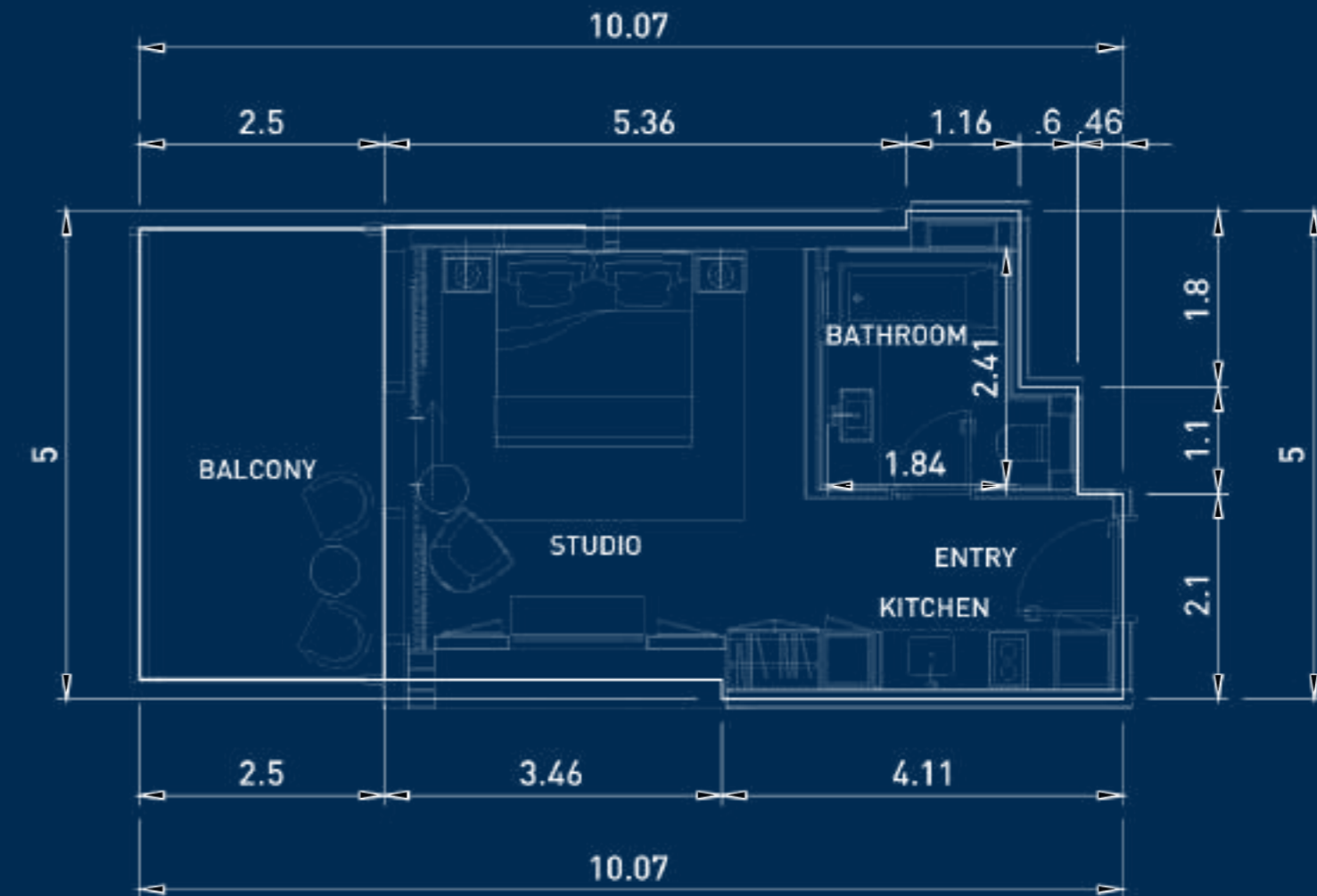


LEVEL 12 KEY PLAN



Note: This is a conceptual plan and the dimensions are tentative subject to further design development. The Buyer understands and accepts the reasonable potential variance regarding the dimensions.

All dimensions are in meters.



Note: This is a conceptual plan and the dimensions are tentative subject to further design development. The Buyer understands and accepts the reasonable potential variance regarding the dimensions.

All dimensions are in meters.

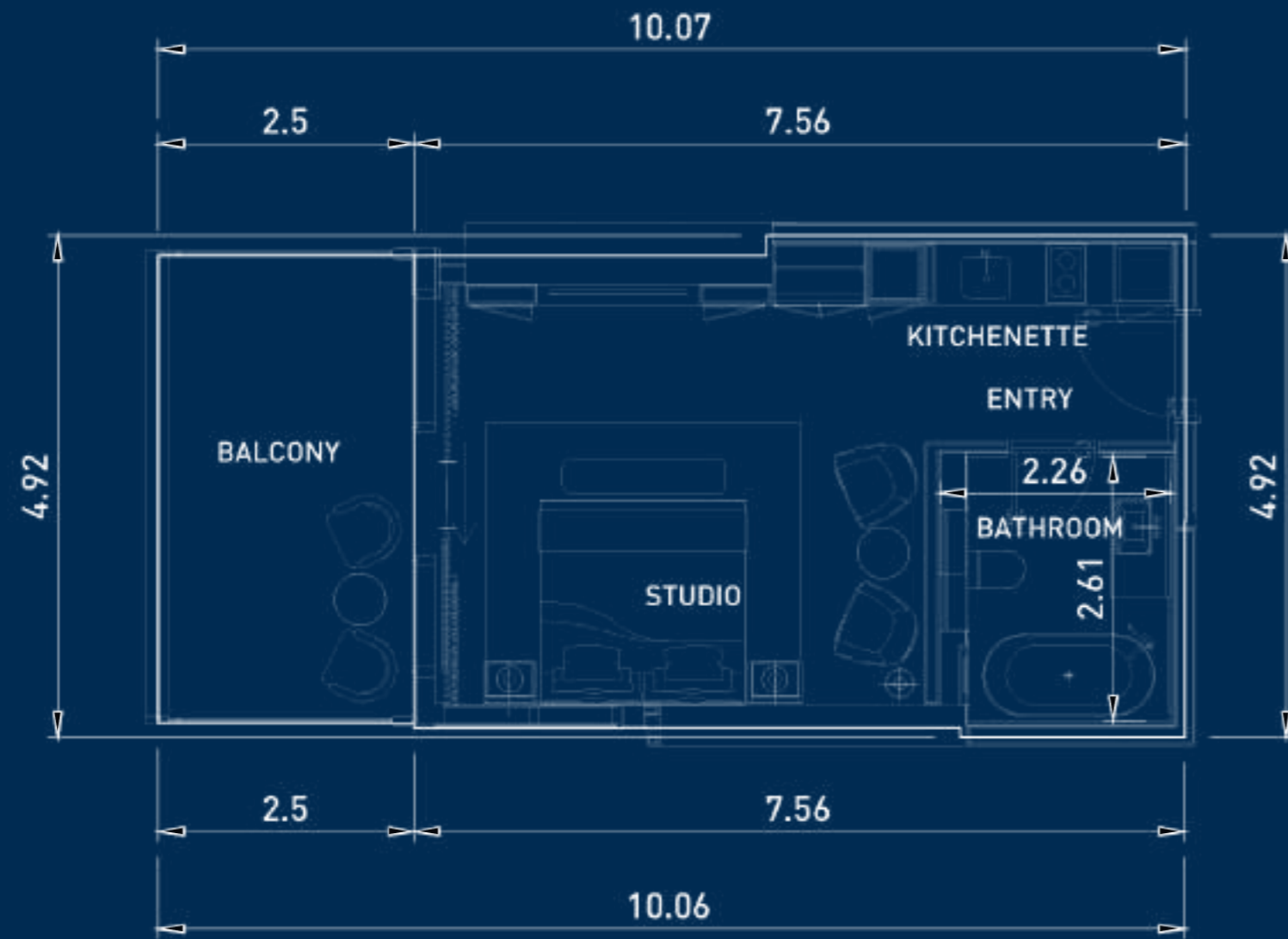


### STUDIO UNIT 1207

INDOOR	387.72 SQFT.	36.02 SQM.
OUTDOOR	123.57 SQFT.	11.48 SQM.
TOTAL AREA	511.29 SQFT.	47.50 SQM.



LEVEL 12 KEY PLAN



Note: This is a conceptual plan and the dimensions are tentative subject to further design development. The Buyer understands and accepts the reasonable potential variance regarding the dimensions.

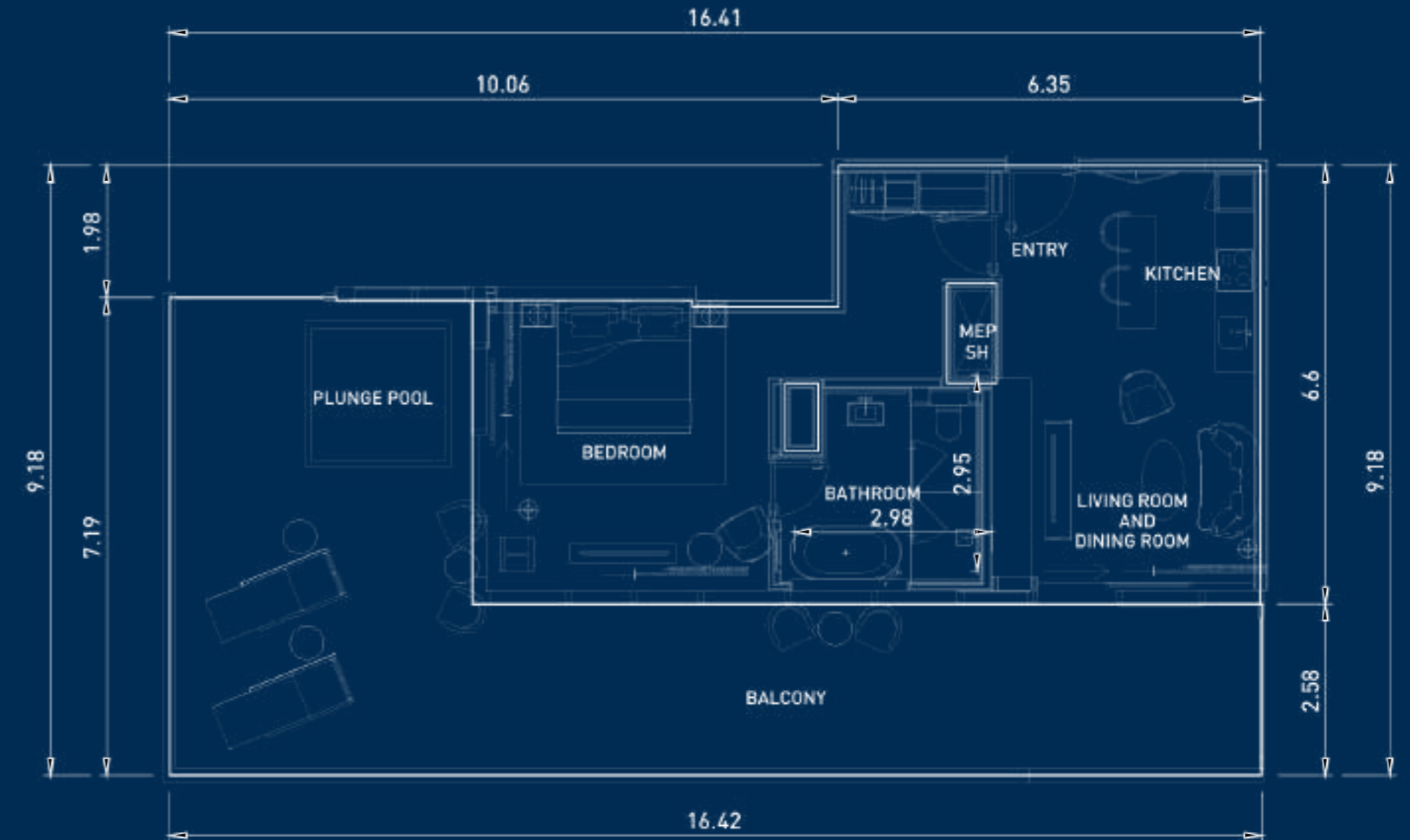
All dimensions are in meters.

### 1 BEDROOM UNIT 1208

INDOOR	703.21 SQFT.	65.33 SQM.
OUTDOOR	680.18 SQFT.	63.19 SQM.
TOTAL AREA	1,383.39 SQFT.	128.52 SQM.



LEVEL 12 KEY PLAN



Note: This is a conceptual plan and the dimensions are tentative subject to further design development. The Buyer understands and accepts the reasonable potential variance regarding the dimensions.

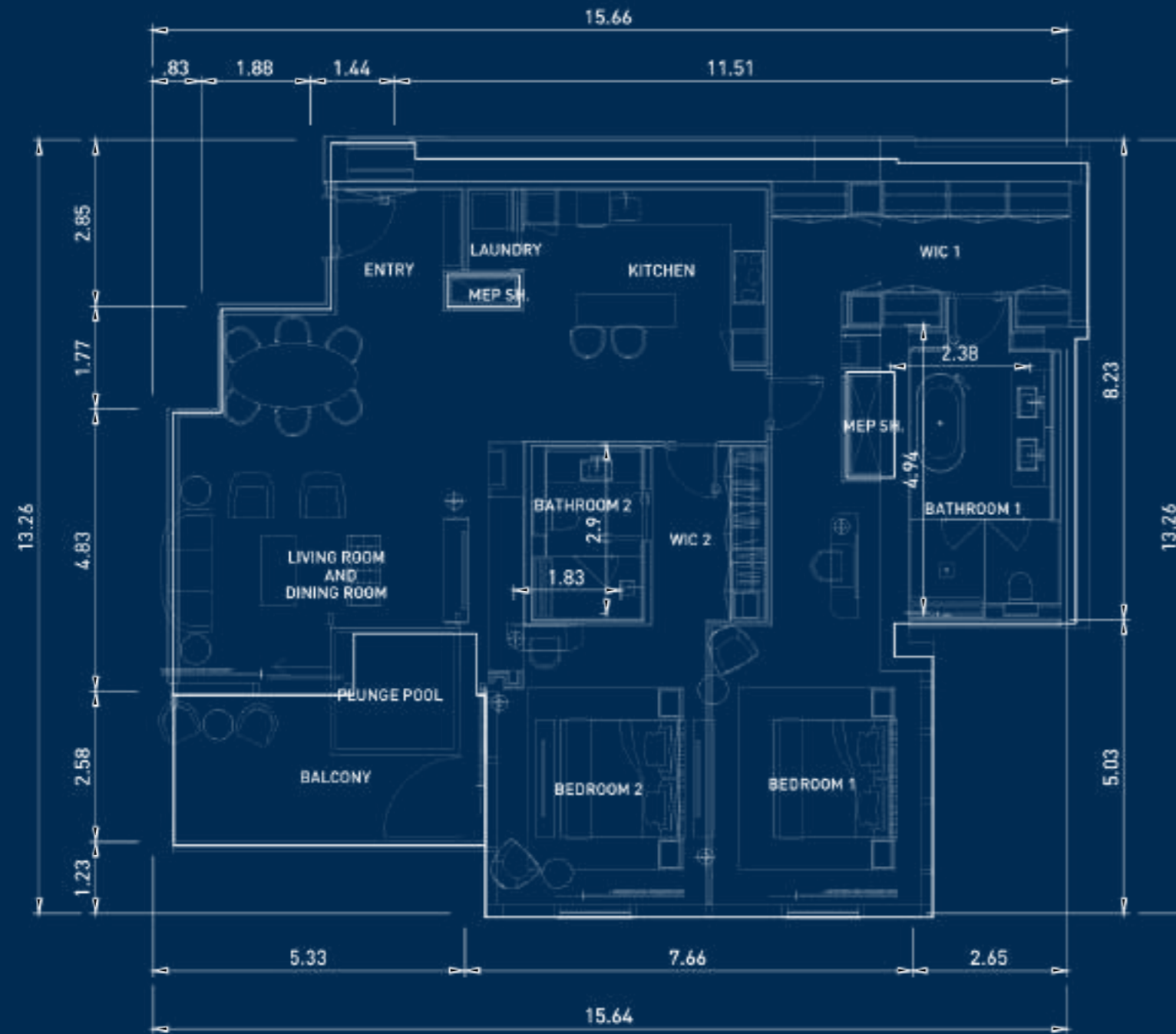
All dimensions are in meters.

## 2 BEDROOM UNIT 1209

INDOOR	1,674.23 SQFT.	155.54 SQM.
OUTDOOR	171.58 SQFT.	15.94SQM.
<b>TOTAL AREA</b>	<b>1,845.81 SQFT.</b>	<b>171.48 SQM.</b>



LEVEL 12 KEY PLAN



Note: This is a conceptual plan and the dimensions are tentative subject to further design development. The Buyer understands and accepts the reasonable potential variance regarding the dimensions.

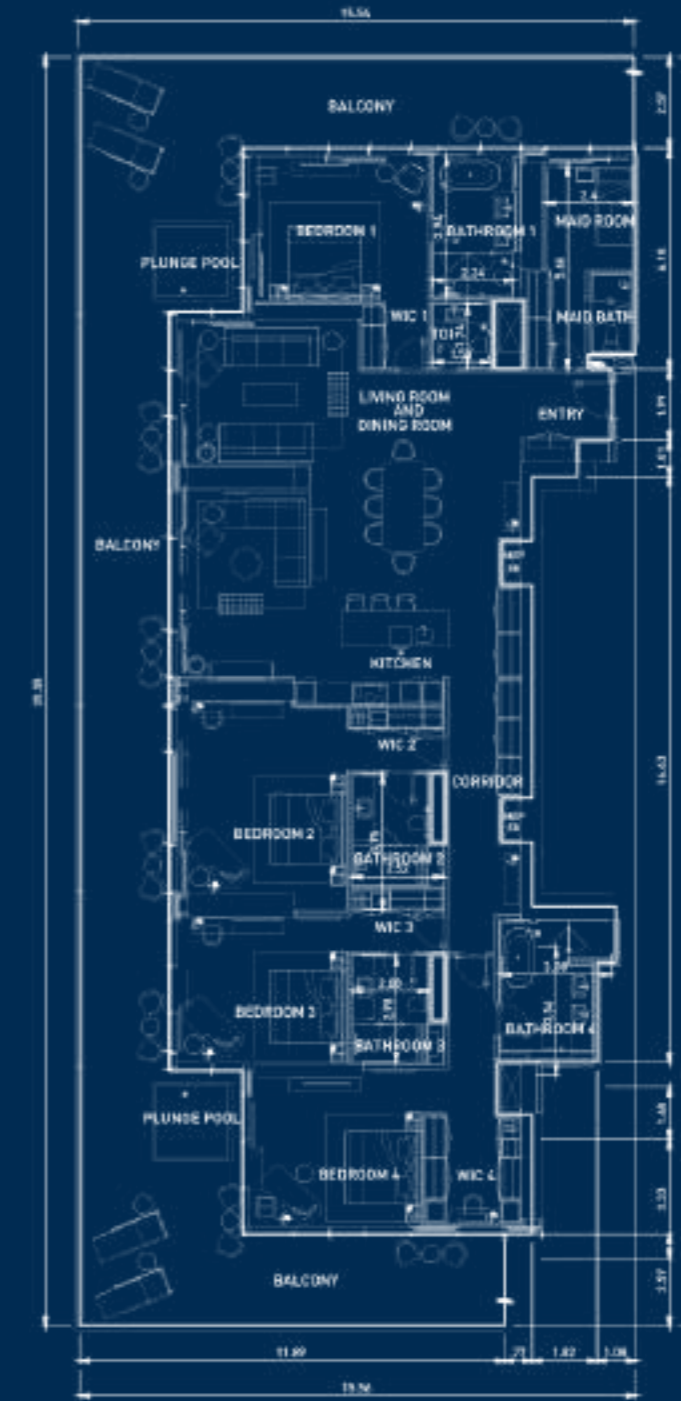
All dimensions are in meters.

## 4 BEDROOM UNIT 2403

INDOOR	3,393.24 SQFT.	315.24 SQM.
OUTDOOR	1,779.50 SQFT.	165.32 SQM.
<b>TOTAL AREA</b>	<b>5,172.75 SQFT.</b>	<b>480.56 SQM.</b>



LEVEL 22 KEY PLAN



Note: This is a conceptual plan and the dimensions are tentative subject to further design development. The Buyer understands and accepts the reasonable potential variance regarding the dimensions.

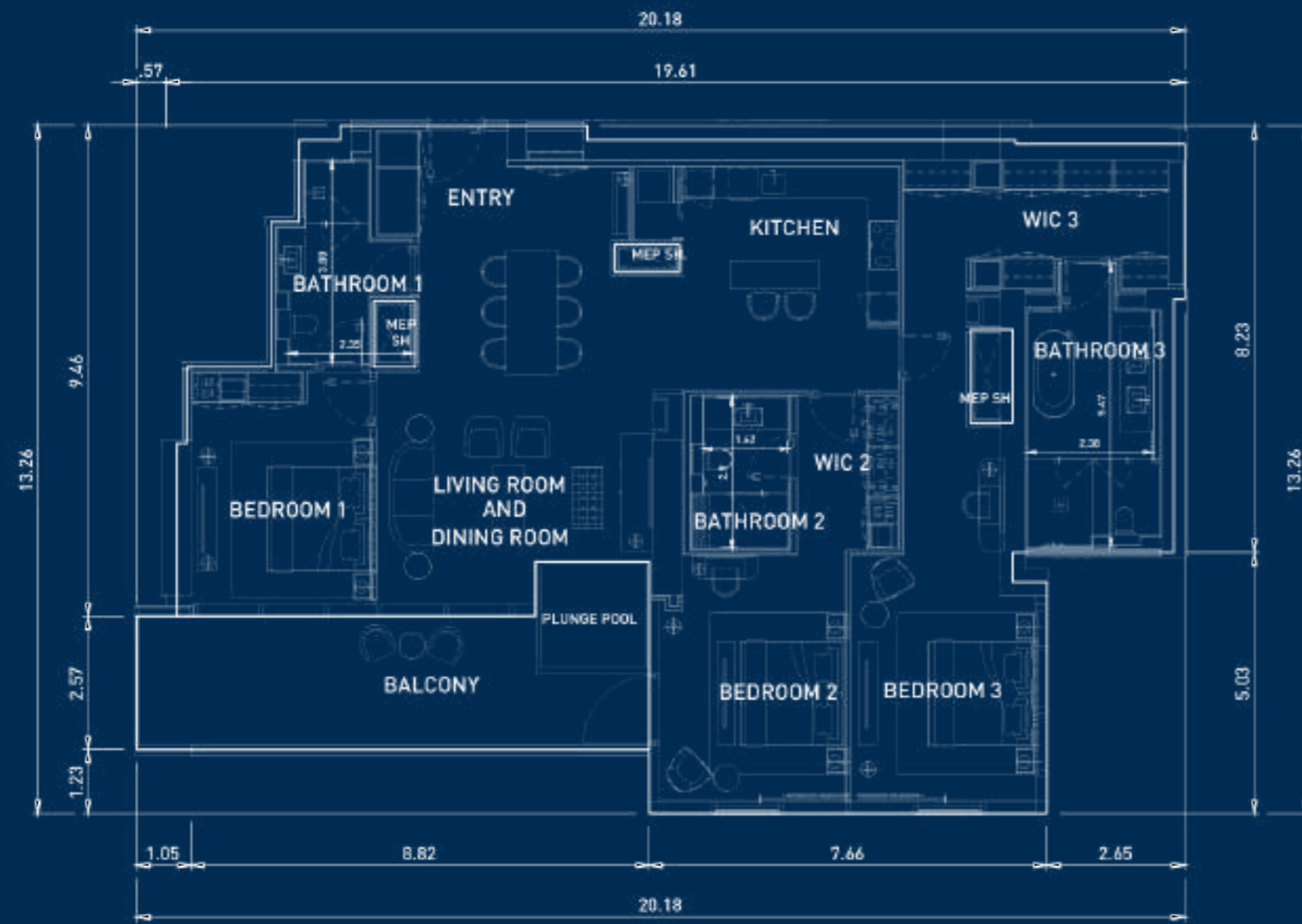
All dimensions are in meters.

### 3 BEDROOM UNIT 2404

INDOOR	2,036.87 SQFT.	189.23 SQM.
OUTDOOR	297.09 SQFT.	27.60 SQM.
TOTAL AREA	2,333.96 SQFT.	216.83 SQM.

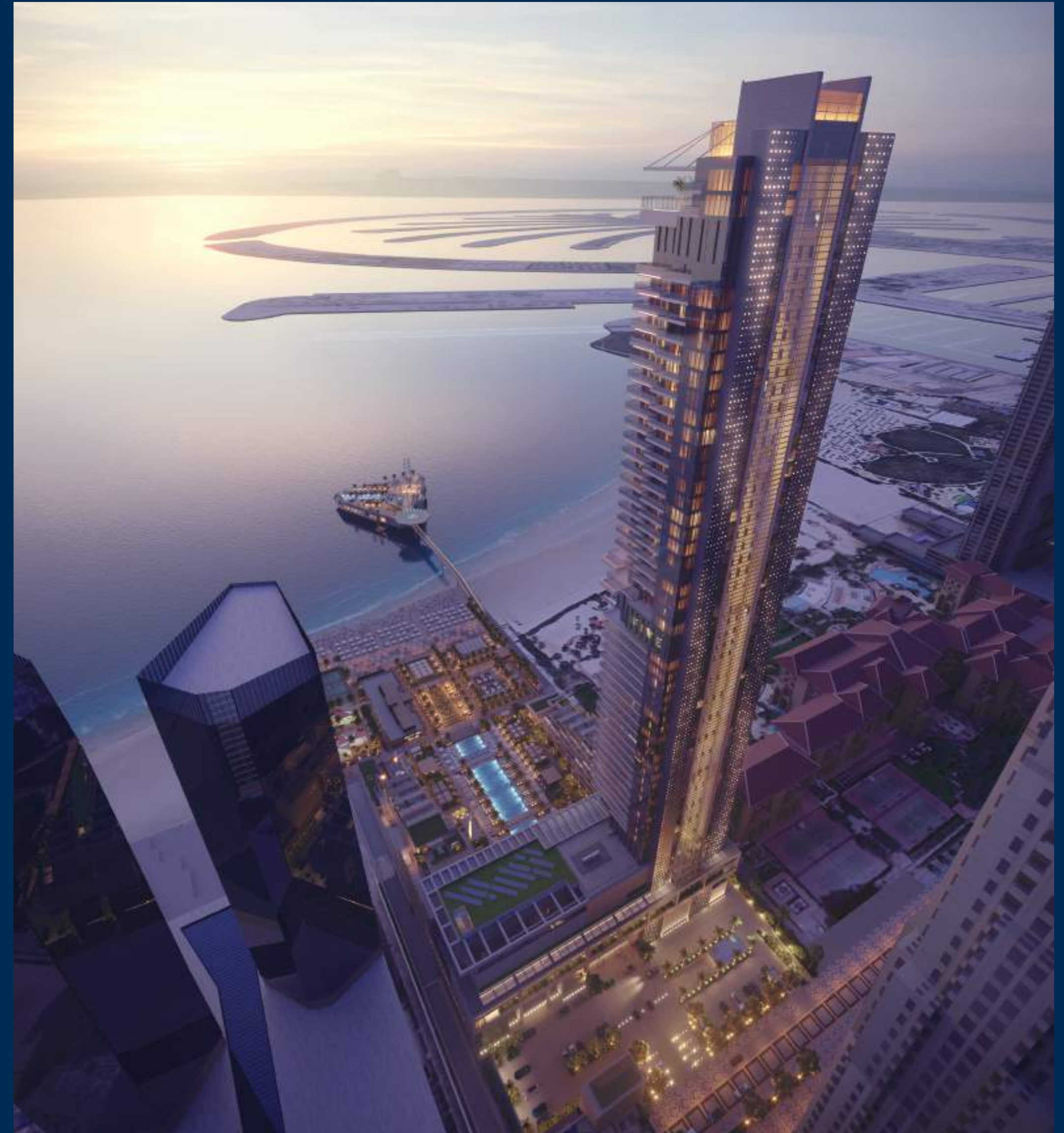


LEVEL 22 KEY PLAN



Note: This is a conceptual plan and the dimensions are tentative subject to further design development. The Buyer understands and accepts the reasonable potential variance regarding the dimensions.

All dimensions are in meters.

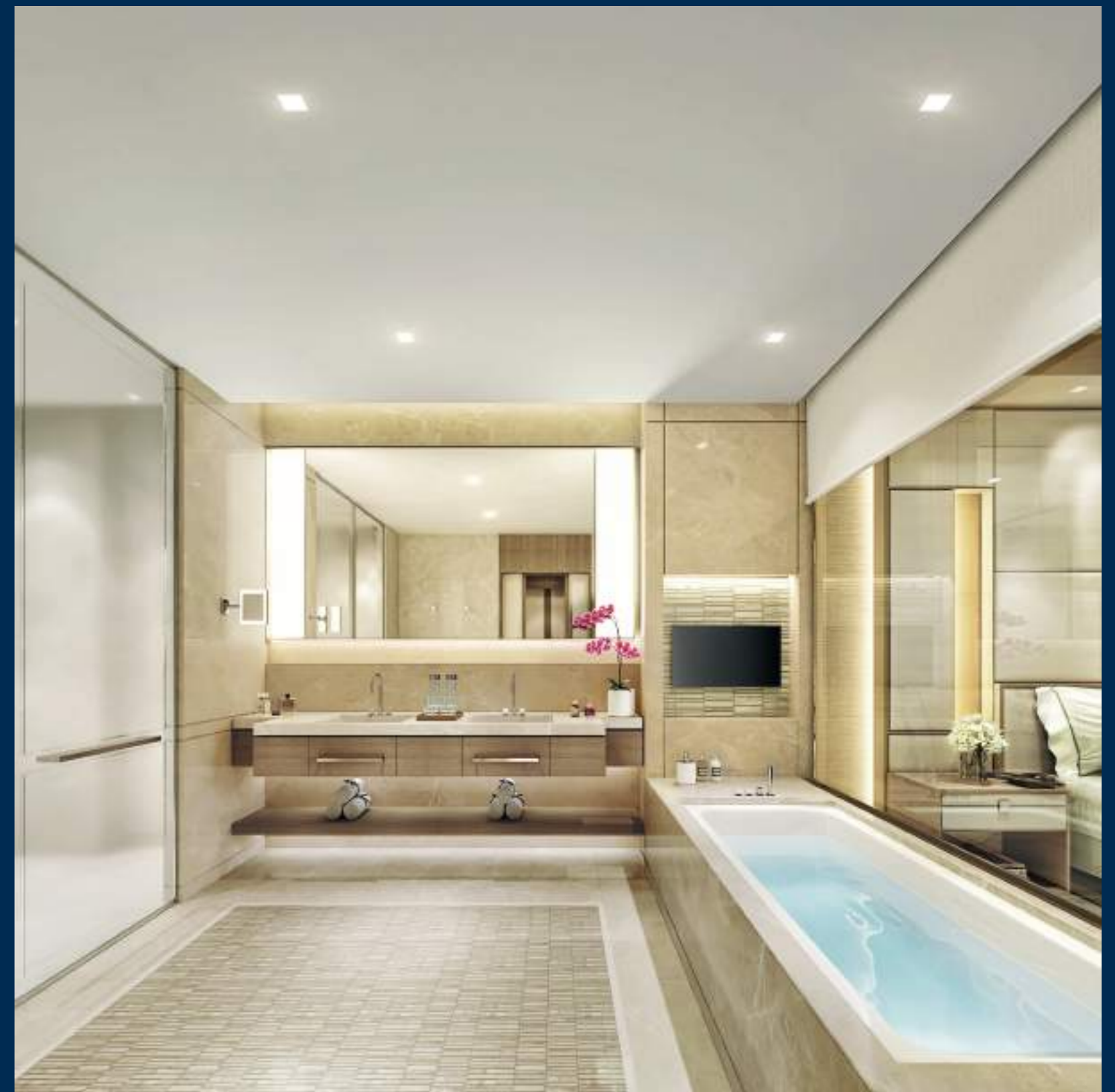


# SUITTES





PODIUM SUITE.













BEACH VILLA SUITE.







EXPLORER SUITE.





MUSICIANS SUITE.







PEARL SUITE.







ROYAL SUITE.







WRITERS SUITE.











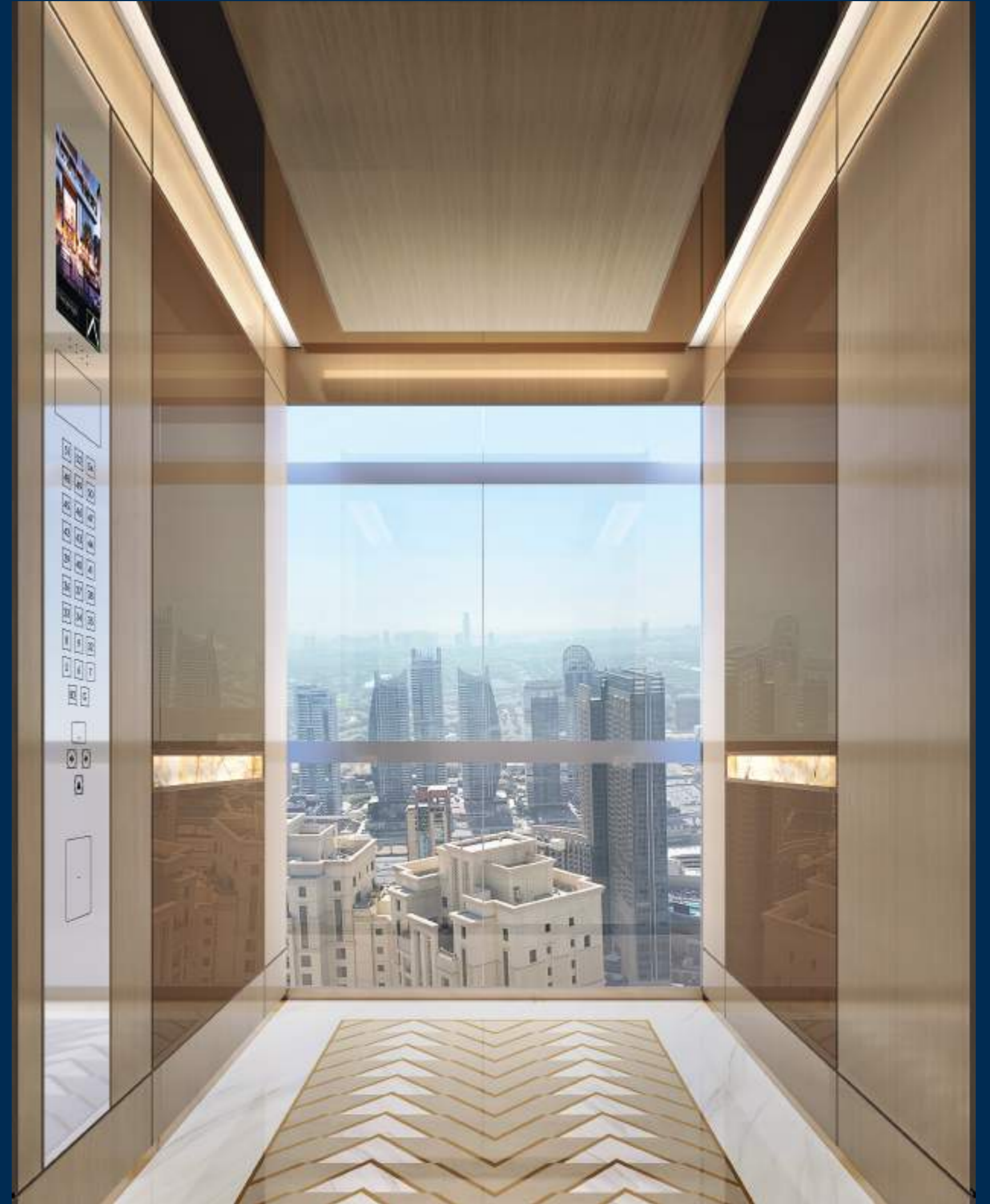
**LOBBY.**  
When you've arrived  
you know you've arrived.

Cool. Dazzling. Opulent. The lobby is a gateway to a spectacular time. Marble floors and sensational chandeliers. Sit where you can be seen. Or where you can't and watch the world flow by.





CABIN LIFT.



PANORAMIC LIFT.



SUITES CORRIDOR.

# VENUES



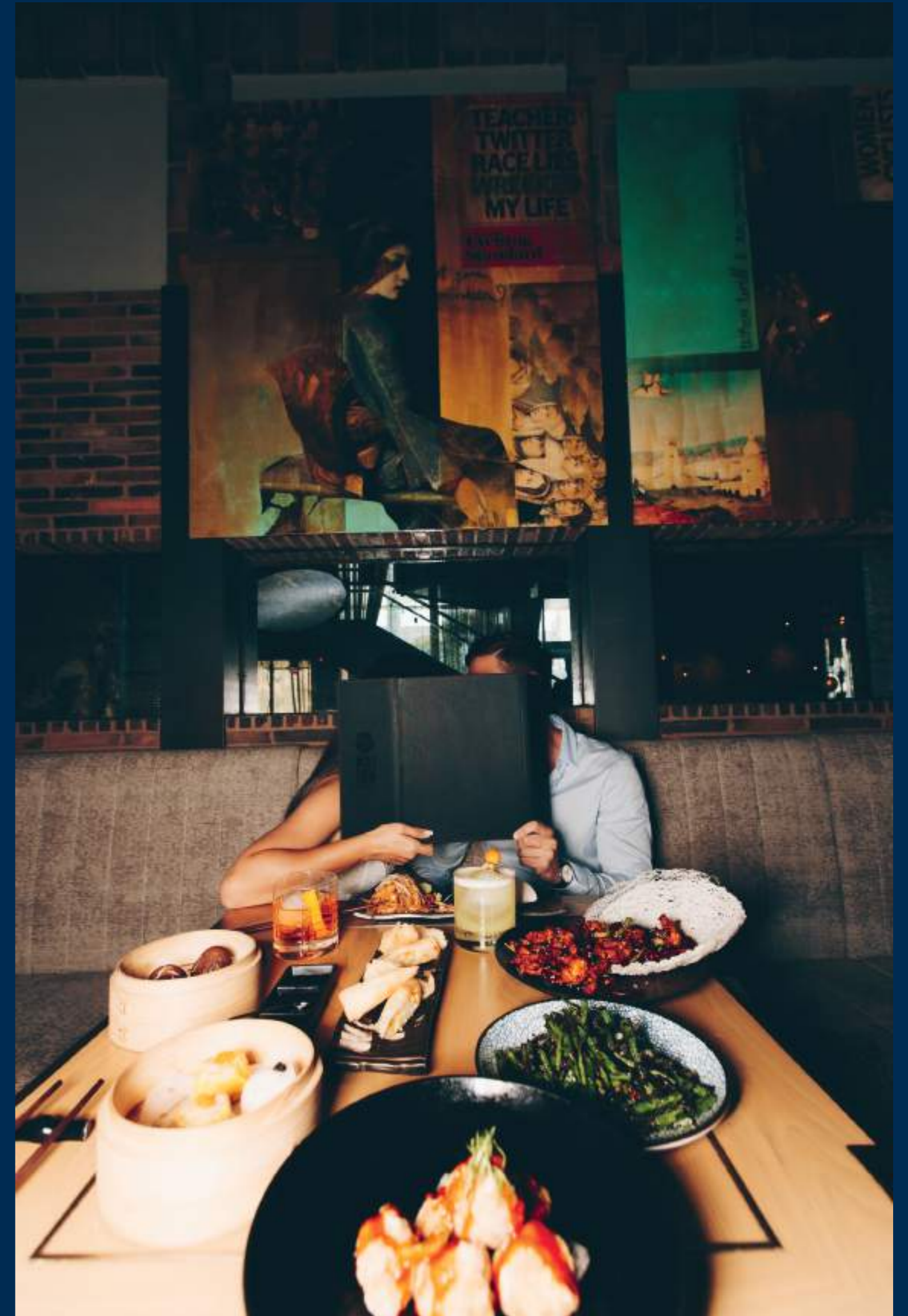




#### VENUE INTRODUCTION.

If there's one thing we know at FIVE it's how to have a good time. Our homegrown and signature restaurants, bars as well as nightclub have been showered with awards (44 in total) for the parties, atmosphere and cuisines we curate. Laid back sundowners, intimate dinners, or high-octane partying, we have it all. In luxury, style and with exquisite taste.

Dive on in. Stay tuned for our latest boundary-breaking experiential entertainment offerings coming down the pipeline.





**PERUVIAN.**  
Flavour to savour.

The sensational flavours of Peru  
from Ceviche to Lomo Saltado.  
Cooked for you with precision and  
passion in an extraordinary space.











**BEACH CLUB.**  
Grab life by the beach.

Beachside glamour means world-class cocktails, somewhere to see and be seen. Shady cabanas, sunny swims and food to float your imagination. Why lie low when you can reach the heights?









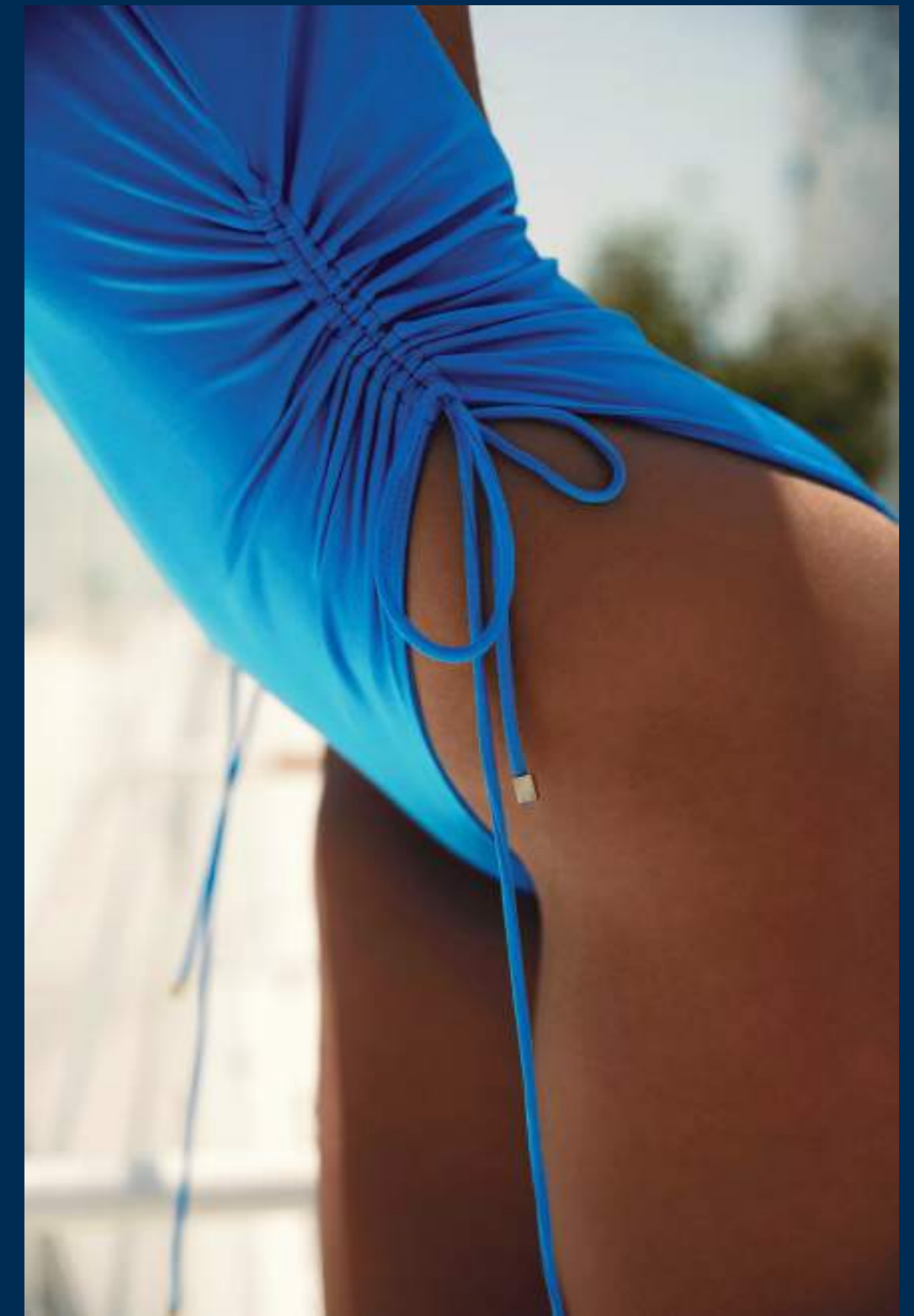
**POOL BAR & GRILL.**  
Swim in. Chill Out.

Plunge into crisp blue water.  
Then dive into delicious drinks and  
brilliant food perfectly prepared for  
an exquisite day by the pool.  
Come as you are.











**CAFÉ.**  
A perk of FIVE life.

Slip into the café whenever the mood strikes. The coffee is to die for, the cakes and bites are the stuff of life and the people-watching is just world-class.









**SPA CAFÉ.**  
Eat well. Be well.

We've pampered your body. Now pamper your taste buds with a health-giving infusion or a light and mindful snack. All in the elegant, calming surroundings of our extraordinary spa.



BALLROOM.



TEA LOUNGE.





LOUNGE.



# OUR PROPERTIES







#### **FIVE PALM JUMERIAH.**

Dubbed the hottest hotel on Palm Jumeirah, FIVE Palm Jumeirah is set against a breathtaking backdrop of the beach and Dubai Marina skyline.

This lifestyle hotel is a party and culinary hotspot with a range of restaurants, bars, and nightclub, inviting a vivid experience every day.



Whether you are looking for gourmet dining or to dance the night away, our resort creates laid-back or high energy choices from breakfast to the early hours.







**FIVE JUMEIRAH VILLAGE.**

FIVE Jumeirah Village is a glorious city-chic hotel that captures the pulsating energy of new Dubai.

Private high-rise pool parties, glamorous sunbathing or intimate dinners overlooking the world-famous Dubai skyline. It is your experience to create.



Our sky villas were designed with more than sleep in mind. FIVE Jumeirah Village offers exceptional entertainment and culinary opportunities, with first-rate guest services.

In short, FIVE knows how the party goes down.



Soul Street at FIVE Jumeriah Village.



#### **FIVE ZURICH.**

We recently got our hands on one of Switzerland's most famous hotels and gave it the FIVE makeover.

Ready to open its doors in 2022, this newly revamped lifestyle hotel and Swiss hot spot is a joy to behold. Nestled in Zurich's stunning Uetliberg plateau, the hotel has sweeping views across the city and beyond.

We're bringing together the best of Swiss hospitality with FIVE's characteristic flair for exceptionally indulgent experiences for our local and international clientele.



It's got good pedigree too, having hosted the likes to Rihanna, Freddy Mercury, Grace Jones and Muhammad Ali over the years. We can't wait to begin our own journey and fling the doors open to the world next year.